

Vitra

SHOWER SYSTEMS

User Manual

CONTENTS

Foreword	3
General Characteristics of the Product	3
Matters requiring attention During Shipping and Transportation.....	3
Shower Systems.....	4
Shower System Installation Steps.....	9
Maintenance of Shower Systems.....	10
• Matters Requiring Attention.....	10
• Problems You May Encounter and Their Solutions.....	10
• Cleaning of Shower Systems.....	10
• Cleaning of Overhead Shower, Handheld Shower and Back Jets.....	10
• Usage of Thermostatic Mixer (For Enjoy Shower Systems).....	10
• Usage of Ion Fresh (For Notte Shower Systems).....	11
Matters Not Covered Under Warranty.....	11
• Transportation, Storage	11
• Installation.....	11
• Use, Cleaning and Maintenance.....	11

Manufacturer Company
Eczacıbaşı Yapı Gereçleri
San. ve Tic. A.Ş.
Şekerpınarı Cumhuriyet Mah.
İsmet İnönü Cad. No: 27
41420 Çayırova / Kocaeli
Tel : (0262) 648 95 00 (Pbx)
Faks : (0262) 658 85 94

General Distribution
Central Service
İntema A.Ş.
Kanyon Ofis Kat: 1819
Büyükdere Cad. No: 185
Levent 34394 İstanbul
Tel : 0212 371 70 00
Faks : 0212 353 13 9495

Consultancy Line
0850 311 70 70
0532 755 75 00

www.vitra.com.tr

Dear customers,

By ensuring a correct and purposeful use of this product which you have purchased, we would like it to deliver the best performance to you.

- 1- Accept the purchased product by removing it from its carton at our sales point and/or at the delivery to address and checking its parts one by one. If any missing materials or any breakage or damage is detected, inform the nearest Authorized Seller or the Authorized Service. In such cases, please protect the product in its original packaging.
- 2- Have the User Manual of the product which you have received without any missing parts or any damages APPROVED by the Authorized Seller.
- 3- We urge you to carefully read this guide in full before having our product installed and keep it for future reference.
- 4- Please call the Authorized Service after completing the preparations for the required infrastructure.
- 5- In the event you need service for installation, maintenance and repairs;
 - Ask from our seller for the telephone number of the Authorized Service in the area you are living in.
 - In places where we do not have a seller, you may get the necessary information from the telephone numbers given in the guide.
 - Ask the service personnel to display their "VitraArtema Authorized Service Personnel Card". Do not let people without a personnel card perform the installation
 - At the completion of the process, the technician is obliged to write the 'Service Form' correctly and in detail and have you sign it and give a copy to you. Please keep the 'Service Form'.
 - Some Authorized Services may have been shut down in time. You can learn the most reliable address from our website at www.vitra.com.tr, which is continuously updated and/or by calling our consultancy lines at 0850 311 70 70 and 0532 755 75 00
 - The items above have great importance for determining people who work under the name of special service and who are not Authorized Services. Please take note of these.
- 6- In case our Seller or our Authorized Service cannot satisfy your request or complaint please contact the communications means provided within the guide.

Sincerely yours,

GENERAL CHARACTERISTICS OF THE PRODUCT

The highest quality polymethylacrylate, in other words, "Acrylic" is used as the primary material in the production of VitrA Acrylic Bathtub Systems. Acrylic which has a high wear resistance is preferred because it can be easily cleaned and does not host microorganisms.

Acrylic is known to be one of most accommodating materials for human nature. Having a flexible structure, acrylic maintains its resilience against impacts and does not deform. Any small scratches which might occur on the surface can easily be eliminated through polishing. Acrylic products do not lose their shine due to a homogenous distribution of color cells, and saves the "first day appearance" over years.

The acrylic plates used in the production of VitrA Acrylic Shower Systems are supplied from Lucite International which is one of the leading producers in the world meets the EN 263 Standards for Acrylic Plates. The plates are assured against wear and tear through a ten-year aging test conducted by TUBITAK.

The usage life of the product is 10 years as per the communiqué on "After-sale Services of Industrial products" published by TR the Ministry of Industry and Trade.

- **VitrA Shower Systems are under warranty for 2 years from the purchase date.**
- **In order for you to benefit from "2-year warranty" application please have the Warranty Certificate approved by the Intema Store or Intema Authorized Seller from which you purchase your product or the VitrA - Artema Authorized Service which installed your bathtub.**
- **In case of any problem, please contact the nearest VitrA-Artema Authorized Service.**

MATTERS REQUIRING ATTENTION DURING SHIPPING AND TRANSPORTATION

- 1- The products should be transported and placed according to the transportation and protection signs found on the package.
- 2- During the forklift carriage of products shipped in crates or cardboard packaging you should make use of pallets.
- 3- In order to prevent products from breaking during their storage and protection they should be placed in accordance with the direction indicated on the packaging and placing them on top of one another should be avoided.
- 4- Product parts removed from packages opened for the purpose of carrying to floors should be checked and carried in a protected manner.
- 5- The protective film layer on the product should not be removed before transportation, installation and repair procedures are completed.

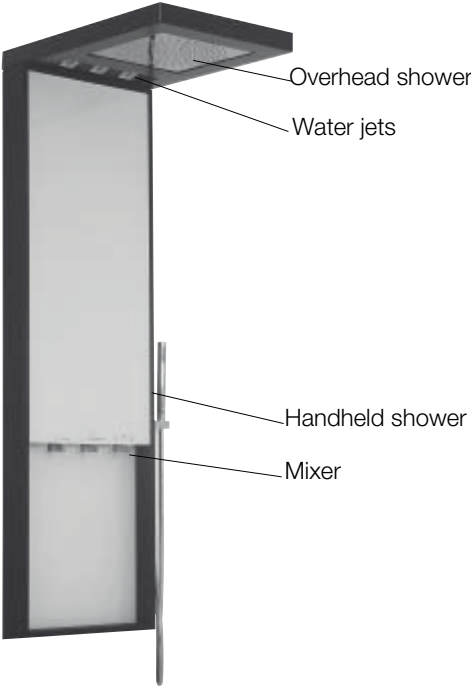
SHOWER SYSTEMS

Notte Shower System with Seat



The product incorporates a concealed mixer, an overhead shower, upper body jets and a folding seat. The water pressure of the installment which the product will be connected to should be between 3-6 bars. If the product is to be used in combination with Ion Fresh technology, the electrical connection must be carried out as shown in the technical data sheet. This product can only be used over shower trays.

Notte Shower System



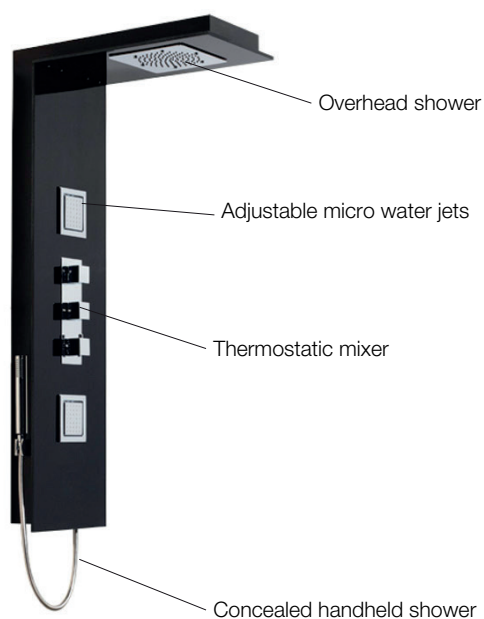
The product incorporates a concealed mixer, an overhead shower and upper body jets. The water pressure of the installment which the product will be connected to should be between 3-6 bars. If the product is to be used in combination with Ion Fresh technology, the electrical connection must be carried out as shown in the technical data sheet. This product can be used over shower trays and bathtubs.

Enjoy Shower System



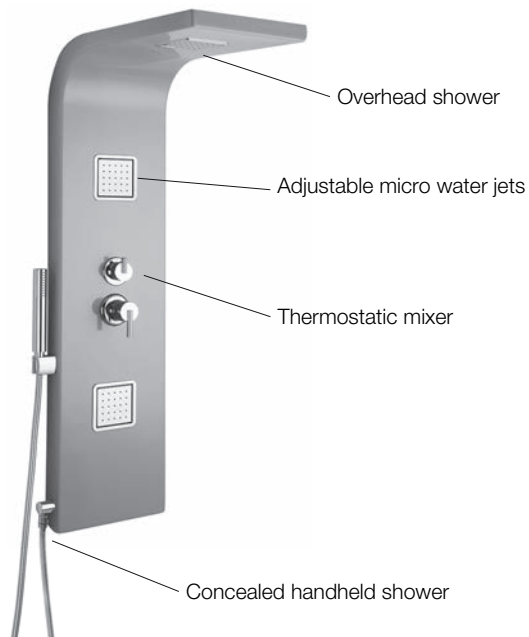
The shower system incorporates 2 back massage areas comprising of micro jets. The product incorporates a thermostatic mixer, 3 racks, a concealed handheld shower and an overhead shower. It can be used over shower trays and bathtubs. The system is recommended to be used with a minimum of 3 bars of water pressure, and does not have any electricity connections.

Enjoy 02 Shower System



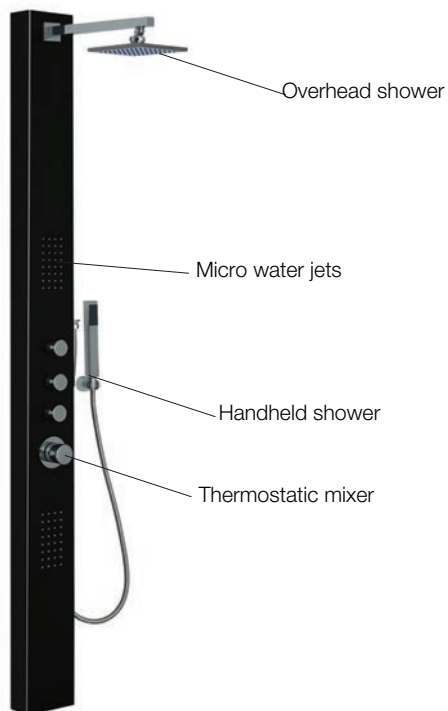
The product incorporates a thermostatic mixer, a concealed handheld shower, an overhead shower and 2 back massage areas comprising of adjustable micro water jets. The water pressure of the installment which the product will be connected to should be between 3-6 bars. It does not require electrical connection. It can be used over shower trays and bathtubs.

Enjoy 03 Shower System



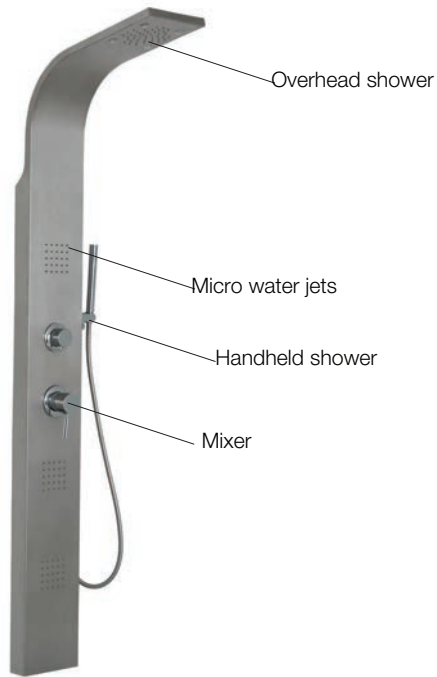
The product incorporates a thermostatic mixer, a concealed handheld shower, an overhead shower and 2 back massage areas comprising of adjustable micro water jets. The water pressure of the installment which the product will be connected to should be between 3-6 bars. It does not require electrical connection. It can be used over shower trays and bathtubs.

MDS 04



The product incorporates a thermostatic mixer, a handheld shower, an overhead shower and 2 back massage areas comprising of adjustable micro water jets. The water pressure of the installment which the product will be connected to should be between 3-6 bars. It does not require electrical connection. It can only be used over shower trays.

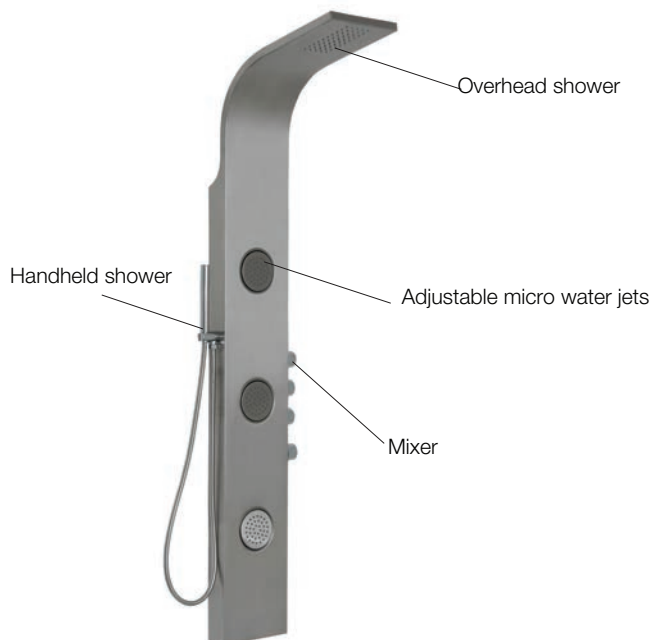
MDS 05



The product incorporates a handheld shower, a thermostatic mixer, an overhead shower and 3 back massage areas comprising of micro water jets.

The water pressure of the installment which the product will be connected to should be between 3-6 bars. It does not require electrical connection. It can be used over shower trays and bathtubs.

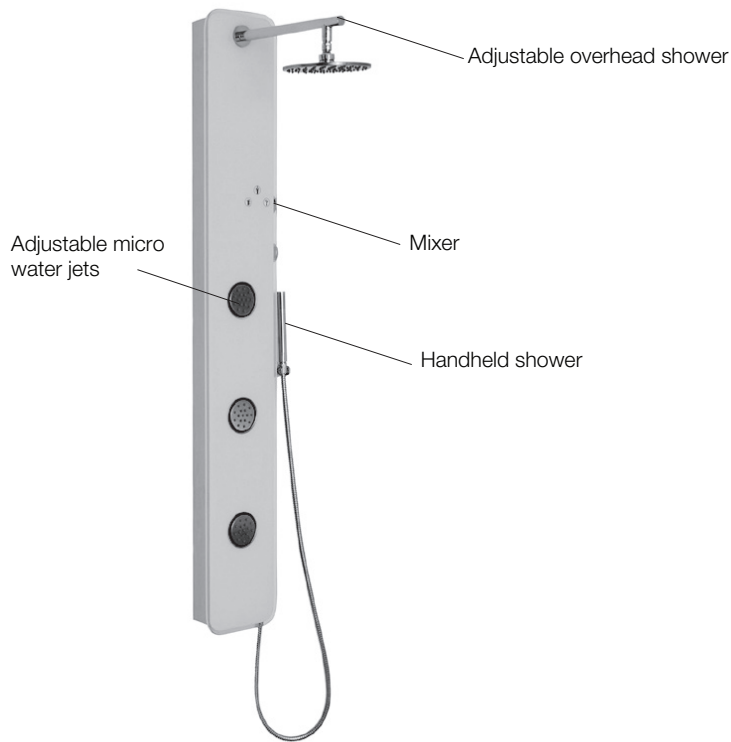
MDS 06



The product incorporates a handheld shower, a mixer, an overhead shower and 3 back massage areas comprising of micro water jets.

The water pressure of the installment which the product will be connected to should be between 3-6 bars. It does not require electrical connection. It can be used over shower trays and bathtubs.

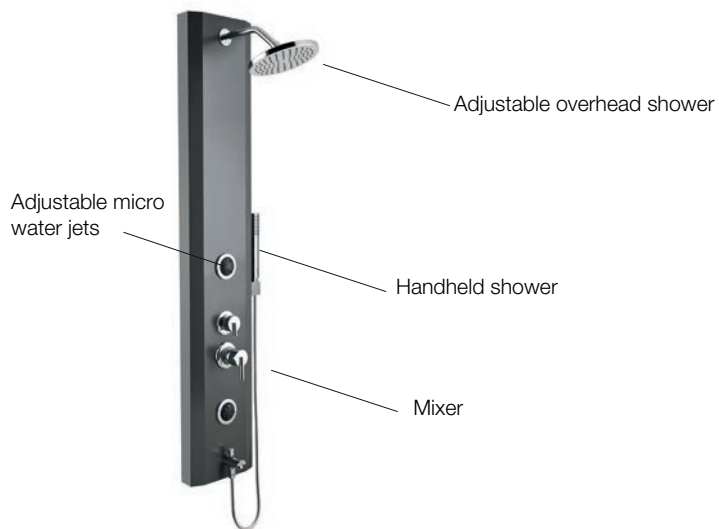
MDS 07



The product incorporates a handheld shower, a mixer, an overhead shower and 3 back massage areas comprising of adjustable micro water jets.

The water pressure of the installment which the product will be connected to should be between 3-6 bars. It does not require electrical connection. It can be used over shower trays and bathtubs.

MDS Move



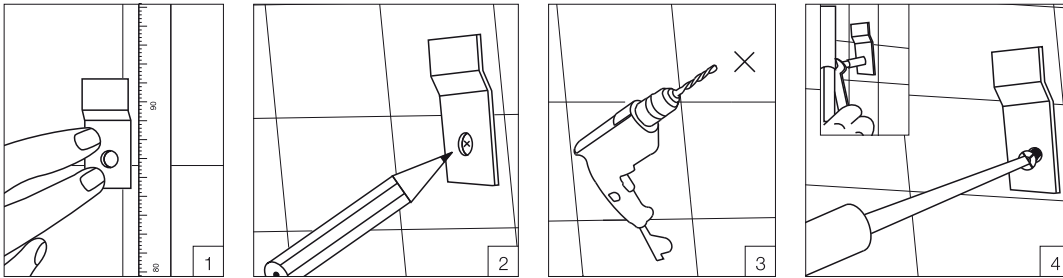
The product incorporates a handheld shower, a mixer, an overhead shower and 2 back massage areas comprising of adjustable micro water jets.

The water pressure of the installment which the product will be connected to should be between 3-6 bars. It does not require electrical connection. It can be used over shower trays and bathtubs.

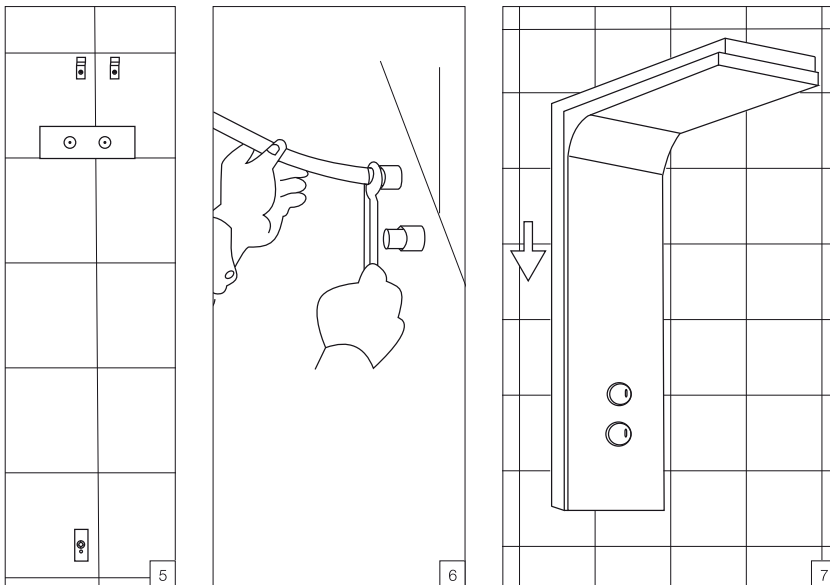
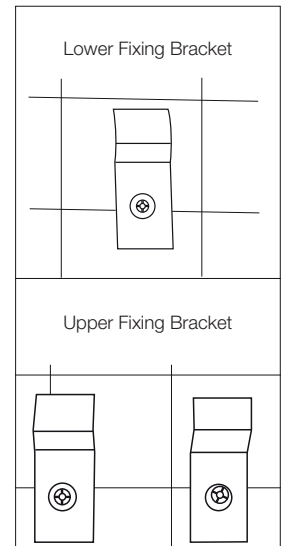
INSTALLATION STEPS FOR SHOWER SYSTEMS

Matters Requiring Attention:

- Before starting the installation of the shower system, the installation of the shower tray must be completed by following the installation procedure according to the model of the shower tray or the bathtub.
- The shower system should be installed after tiling the wall tiles and all the construction work in the bathroom is completed.
- The wall should be straight.
- The technical measurements of the shower system can be found in the Technical Data Sheet provided with the product.
- The water pressure of the installment which the product will be connected to should be between 3-6 bars.
- The Warranty Certificate and the User Manual can be found in the package provided with the product.



- 1- The wall hanger brackets are adjusted at the installation height. The distance between the upper and lower brackets should be adjusted according to the measurements provided in the Product's Technical Data Sheet.
- 2- The wall tiles are marked through the holes on the wall hanger brackets.
- 3-4- The marked spots are drilled for a 10mm peg and the pegs are inserted in the holes.



- 5- After readying the shower system's wall connections for installation, check the suitability of the hot and cold water connection spots which were prepared in advance.
- 6- The flexible hoses on the rear side of the shower system are used for making the hot and cold water connections.
- 7- After checking that it is leak-proof, the shower system is lifted and slid onto the wall hanger brackets.

If desired, a suitable cabin can be installed on the Bathtub or the Shower Tray after the installation of the Shower System is completed.

MAINTENANCE OF THE SHOWER SYSTEMS

MATTERS THAT REQUIRE ATTENTION!

- Acrylic is durable against acids and alkalines. However do not let organic solutions used in dry cleaning, paint remover substances, acetone or other solvents to your compact system.
- Keep lighted cigarettes away from the product.
- If the construction activities in the bath will continue after installation, do not remove the folio layer on the product and apply full protection to the product.

POSSIBLE PROBLEMS AND THEIR SOLUTIONS

Problem	Solution
<ul style="list-style-type: none">• The surface of the shower system is dull and/or scratched.	<ul style="list-style-type: none">• If your shower system is new, the protective film layer on it might not have been removed.• If dullness/scratches occur after a certain period of use, you may be using incorrect cleaning materials. See the 'Cleaning of Shower Systems' section.
<ul style="list-style-type: none">• Very little / no water comes out of the jets.	<ul style="list-style-type: none">• It is recommended that you use your shower system with minimum 3 bars water pressure to get the required efficiency.

If your problems persist please contact the nearest Vitra-Artema Authorized Service.

Cleaning the Acrylic Parts

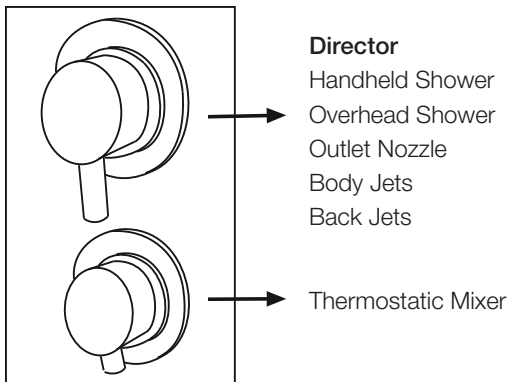
- Right after you use your bathtub, clean it with a liquid bath cleaner or a decalcifier and a soft cloth and warm water. Otherwise unwanted soap products, dirt and hard water will create a thin layer on the acrylic surface and it will become more difficult to clean.
- Do not use hydrochloric acid, abrasives, powdered detergents and cream detergents that contain powders, soft soap and hard/scratching cleaning sponges for cleaning your bathtub.
- All of the chrome parts on your product are removable. In order to prevent the corrosion that might occur due to using excessively hard water it is recommended that these parts be disassembled and cleaned with decalcifying cleaning agents once per month. This procedure is shown in the Maintenance of Bathtub Systems section.

Cleaning The Overhead And Handheld Showers

The overhead and handheld shower heads and the back jets have flexible nozzles which can be easily cleaned in case of calcification. The calcification should be cleaned at specific intervals by moving these points right and left using a soft cloth or your hand.

Termostatik Batarya Kullanımı (Enjoy Masajlı Duş Sistemi İçin)

Termostatik batarya ile istenilen sıcaklık ayarlandıktan sonra yıkanma süresince aynı derecede kalması sağlanmaktadır.



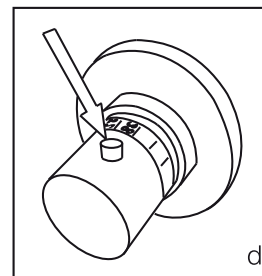
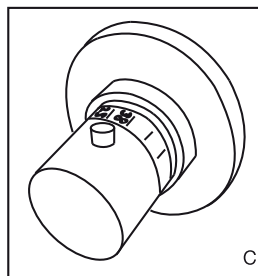
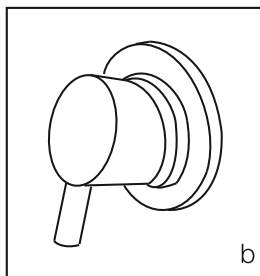
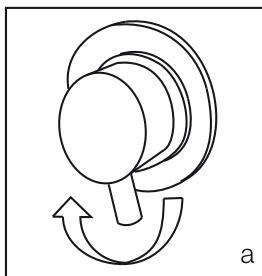
1- Turning water on and off

- a. The director arm is lifted to turn on the water. The more you lift the more water flows.
- b. Function is selected by turning the arm left and right.

2- Adjusting the temperature

- c. The temperature values on the thermostatic mixer are between 20C and 50C. These values are indicated with numbers. The desired temperature value is aligned with the black line on the body. The temperature is increased by rotating the wheel "counter clockwise". The maximum recommended temperature is 38C
- d. In order to obtain a higher temperature the temperature indicator is rotated by pressing on the pin located on the wheel.

Not: The maximum recommended temperature is 38 C.



In the MSD 04 and Enjoy 02 Shower Systems, the thermostatic mixer in the mixer group operates with similar functions. The thermostatic mixer is rotated to obtain the desired temperature.

Using the Ion Fresh (for Notte Shower System)

The Ion Fresh technology is electricity powered. Your electrical installation must be prepared before installation of the product.

Benefits of Ion Fresh:

- Prevents dust from sticking on the walls and prevents shock dust attacks of asthma patients.
- Eliminates viruses.
- Eliminates bacteria.
- Deactivates allergens.
- Eliminates odors originating from pets.
- Helps prevent mold formation.

Note: The product will not function when the electric switch of the house needs to be turned off.

DEFECTS NOT COVERED UNDER WARRANTY

Shipping, Storage

- 1- Deformations to the product surface during the shipping and transportation carried out after the products are delivered or any breakages which may occur as the result of impacts,
 - 2- Deformations and breakages on the surfaces of products which remain at the construction site for a long time without protection,
 - 3- Damage to the product as the result of effects of the water and/or humidity in the environment during the storage and use of the products,
 - 4- Products damaged by each other due to stacking on top of each other during storage,
- shall be treated out of scope of the warranty.

Installation

- 1- Failures which occur as the result of incorrect installation, maintenance, repairs and disassembly performed by unauthorized persons,
 - 2- Factors which impact the installation of the product, resulting from the wall or floor not being level, or hot-cold water, waste water drain installments not complying with the infrastructure measurements given in the technical data sheets.
 - 3- Surface deformations and failures occurring due to small particles in the plumbing (stone, sand, gravel, etc.) and encrustation,
 - 4- Failures occurring due to the wall structure being different than the specified types.
 - 5- Failures occurring due to the utility system pressure not being at the required value.
 - 6- Failures occurring due to faulty electrical installment (such as unearthed cable, voltage fluctuations)
- shall be treated out of scope of the warranty.

Use, Cleaning and Maintenance

- 1- Deformations and failures on the surface, electronic parts due to practices other than the use functions specified in the User Guide,
 - 2- Deformations and dullness occurring on the surface of products wiped with cleaning substances containing acid and cleaning substances containing abrasive powders,
 - 3- Deformations and dullness occurring on the surface of products wiped with rough cleaning substances (wire sponge, hardened sponge, etc.),
 - 4- Deformations that welding electrode sparks, flammable substances during alterations made in the bathroom spaces and cigarettes may cause on the product surface,
 - 5- Failures occurring due to use of parts other than original spare parts,
- shall be treated out of scope of the warranty.

VitrA

 Eczacıbaşı

Eczacıbaşı Yapı Gereçleri San. Ve Tic. A.Ş.

Reserves the right to make any technical changes on the product without prior notice